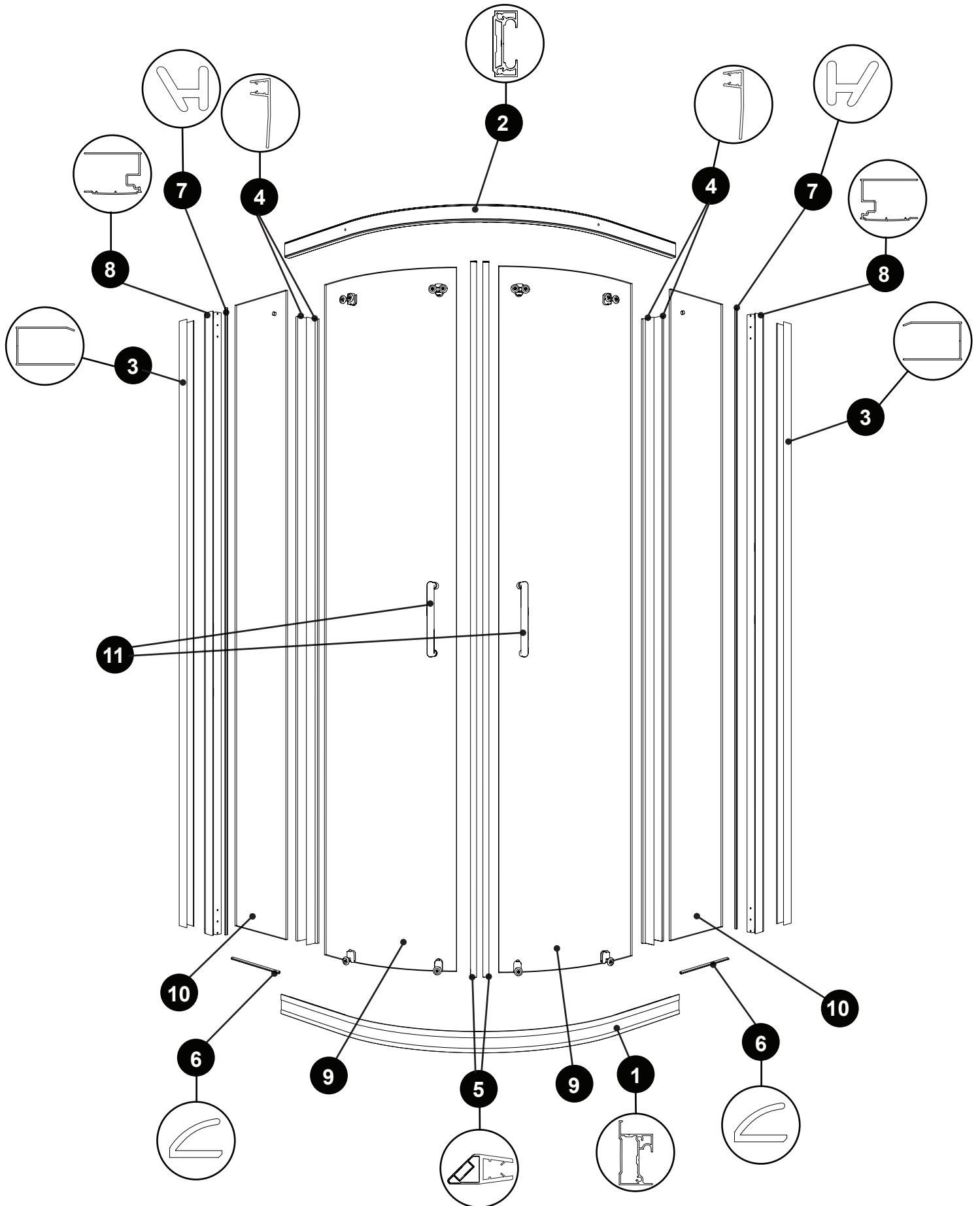
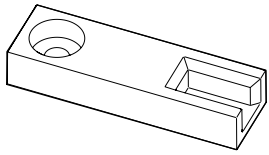


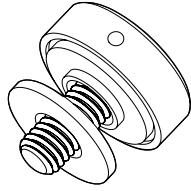
**APOLLO ROUND - PARTS AND HARDWARE LISTING / LISTE DES PIÈCES ET QUINCAILLERIE**



**PARTS AND HARDWARE LISTING / LISTE DES PIÈCES ET QUINCAILLERIE**



12



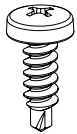
13



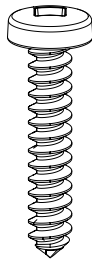
14



15



16



17



18



19



20

ITEM	PARTS AND HARDWARE / PIÈCES ET QUINCAILLERIE	QTY
1	BOTTOM RAIL / RAIL INFÉRIEUR	1
2	TOP RAIL / RAIL SUPÉRIEUR	1
3	WALL JAMB / JAMBAGE	2
4	SIDE GASKET / JOINT LATÉRAL	4
5	MAGNETIC GASKET / JOINT MAGNÉTIQUE	2
6	BOTTOM GASKET / JOINT INFÉRIEUR	2
7	EXTERIOR GASKET / JOINT EXTÉRIEUR	2
8	EXPANDER / EXTENSEUR	2
9	DOOR PANEL / PANNEAU DE PORTE	2
10	FIXED PANEL / PANNEAU FIXE	2
11	HANDLE BAR / POIGNÉE	2
12	BOTTOM SUPPORT / SUPPORT DU BAS	2
13	GLASS FASTENER / FIXATION DE VERRE	2
14	GLASS SUPPORT CAP / CAPUCHON DU SUPPORT DE VERRE	2
15	HOLE PLUG / BOUCHON DE TROU	4
16	ROUND HEAD SELF DRILLING SCREW / VIS RONDE AUTO-PERÇANTE	10
17	SCREW / VIS	14
18	SCREW CAP / CAPUCHON COUVRE-VIS	8
19	BACK SCREW CAP / L'ARRIÈRE DU CAPUCHON COUVRE-VIS	8
20	WALL PLUG / CHEVILLE	6